



# *Classic* SOLIDS





PREMIER ◀ PRINTS

— THE ART ON FABRIC —

# Tafetta

SOLIDS



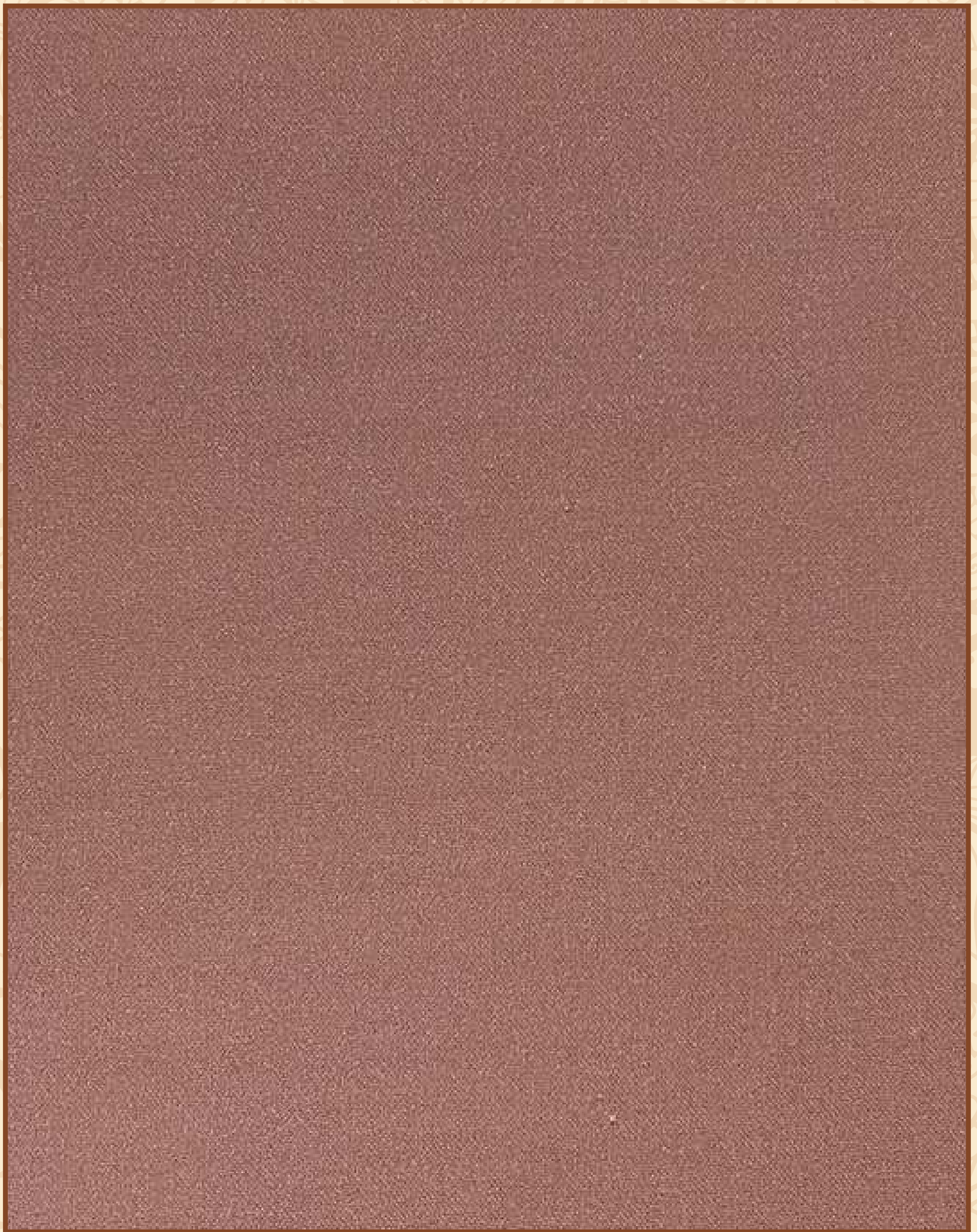
Roman



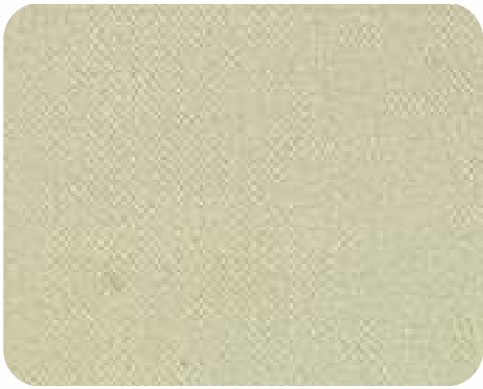
Panel



Roller



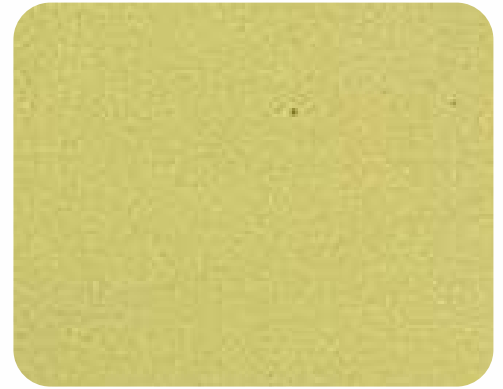
# Tafetta



TF-Solid 1



TF-Solid 2



TF-Solid 3



TF-Solid 4



TF-Solid 5



TF-Solid 6



TF-Solid 7



TF-Solid 8



TF-Solid 9

SOLIDS

# Tafetta



TF-Solid 10



TF-Solid 11



TF-Solid 12



TF-Solid 13



TF-Solid 14



TF-Solid 15



TF-Solid 16



TF-Solid 17



TF-Solid 18

SOLIDS

# Tafetta



TF-Solid 19



TF-Solid 20



TF-Solid 21



TF-Solid 22



TF-Solid 23



TF-Solid 24



TF-Solid 25



TF-Solid 26



TF-Solid 27

SOLIDS

# Tafetta



TF-Solid 28



TF-Solid 29



TF-Solid 30



TF-Solid 31



TF-Solid 32



TF-Solid 33



TF-Solid 34



TF-Solid 35



TF-Solid 36

SOLIDS



# Tafetta



TF-Solid 37



TF-Solid 38



TF-Solid 39



TF-Solid 40



TF-Solid 41



TF-Solid 42



TF-Solid 43



TF-Solid 44



TF-Solid 45

SOLIDS

# Tafetta



TF-Solid 46



TF-Solid 47



TF-Solid 48



TF-Solid 49



TF-Solid 50



TF-Solid 51



TF-Solid 52



TF-Solid 53



TF-Solid 54

SOLIDS

# Screen

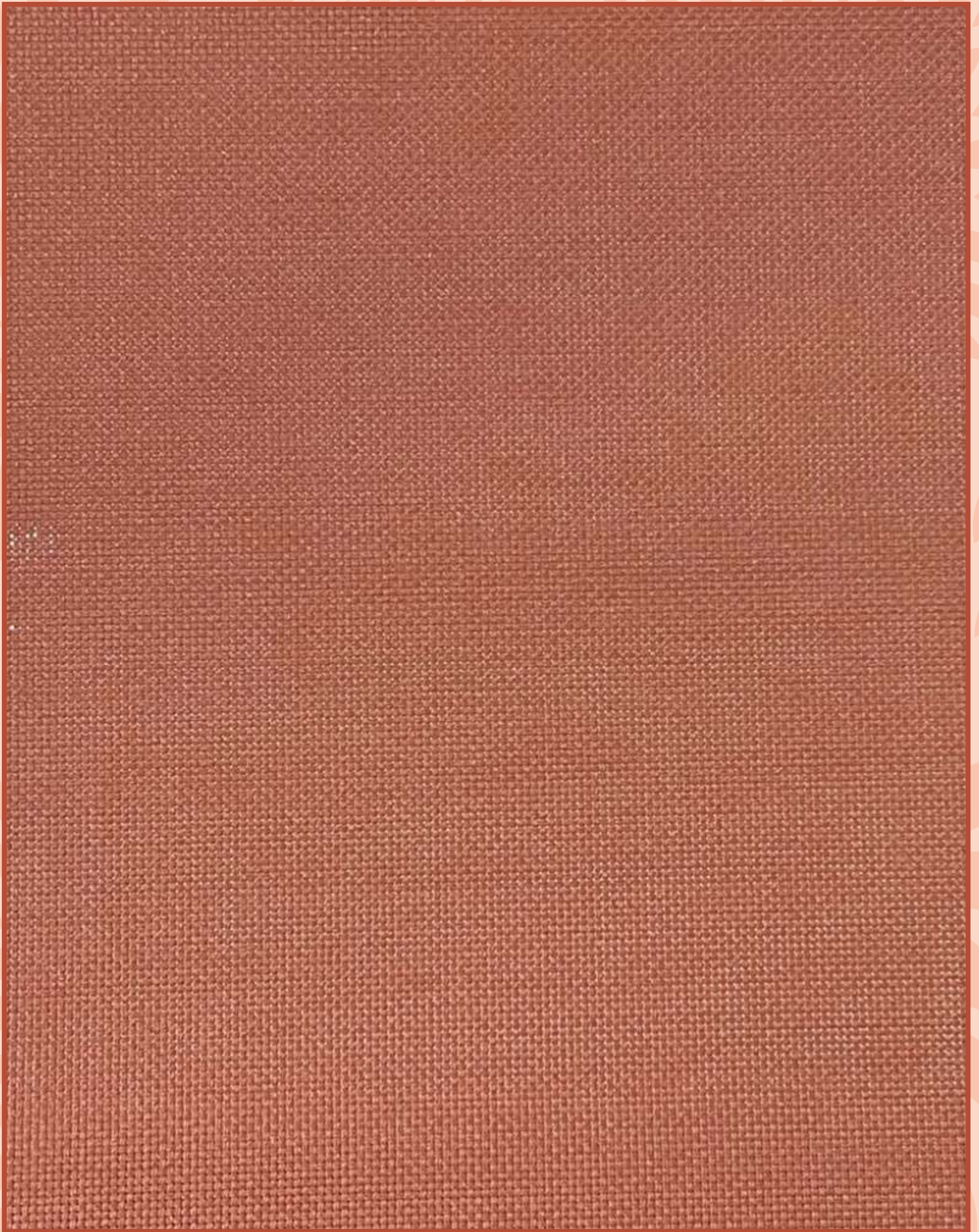
SOLIDS



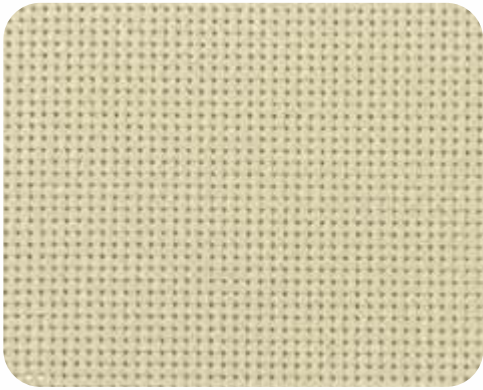
Panel



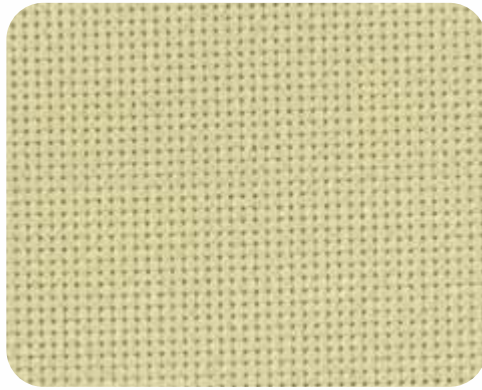
Roller



# Screen



SC-Solid 1



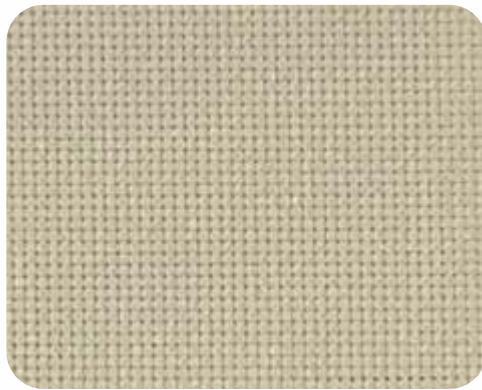
SC-Solid 2



SC-Solid 3



SC-Solid 4



SC-Solid 5



SC-Solid 6



SC-Solid 7



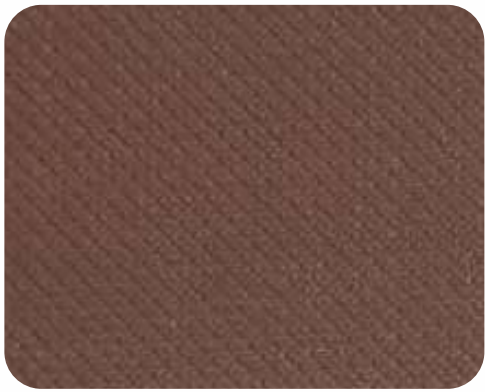
SC-Solid 8



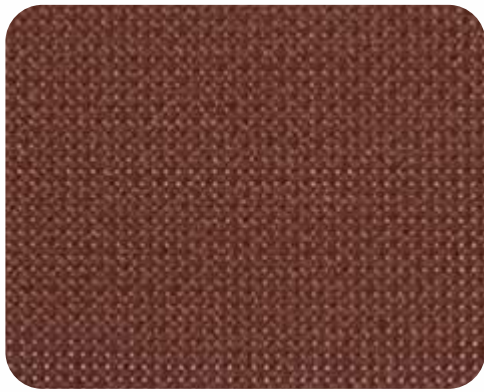
SC-Solid 9

SOLIDS

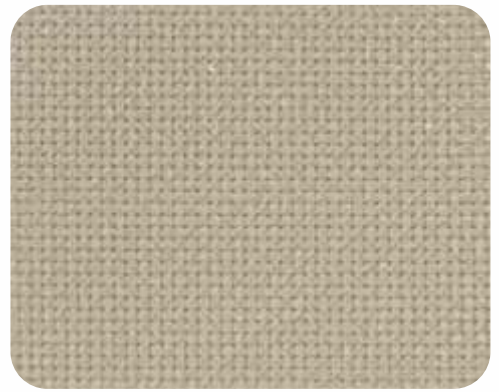
# Screen



SC-Solid 10



SC-Solid 11



SC-Solid 12



SC-Solid 13



SC-Solid 14



SC-Solid 15



SC-Solid 16



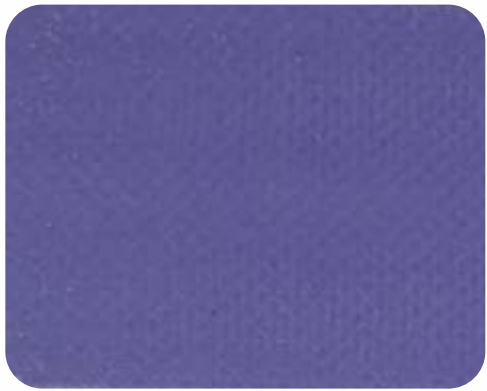
SC-Solid 17



SC-Solid 18

SOLIDS

# Screen



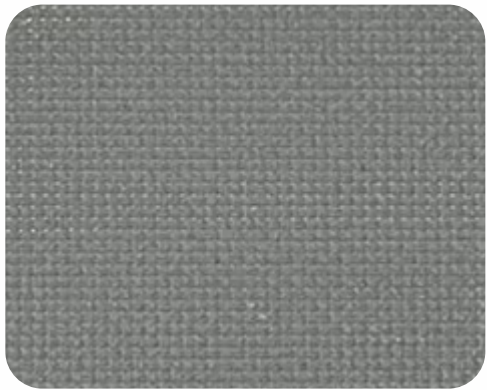
SC-Solid 19



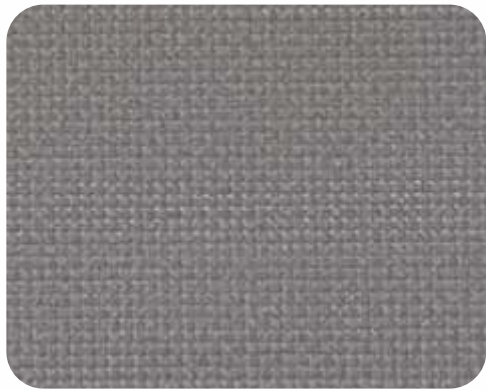
SC-Solid 20



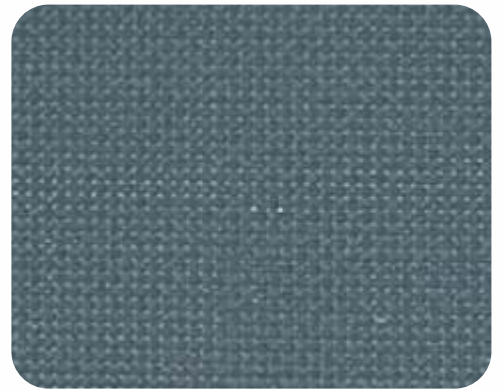
SC-Solid 21



SC-Solid 22



SC-Solid 23



SC-Solid 24



SC-Solid 25



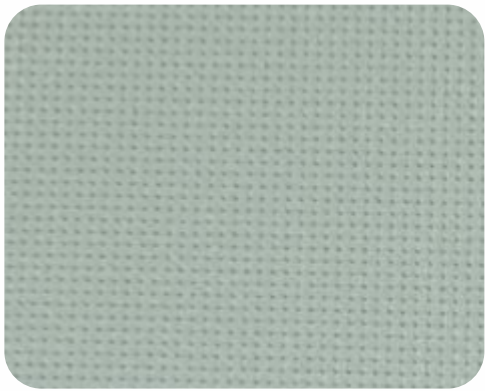
SC-Solid 26



SC-Solid 27

SOLIDS

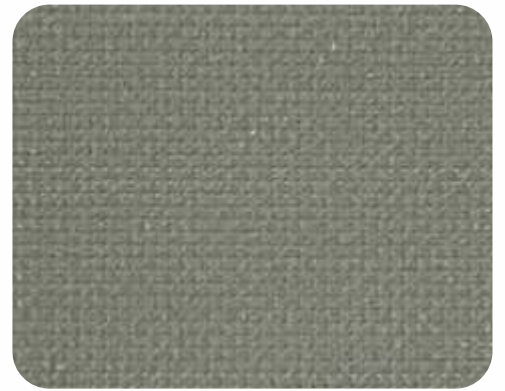
# Screen



SC-Solid 28



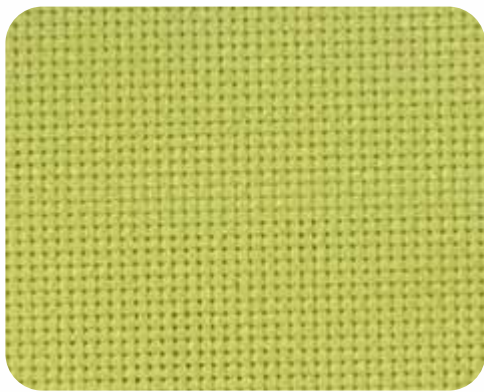
SC-Solid 29



SC-Solid 30



SC-Solid 31



SC-Solid 32



SC-Solid 33



SC-Solid 34



SC-Solid 35



SC-Solid 36

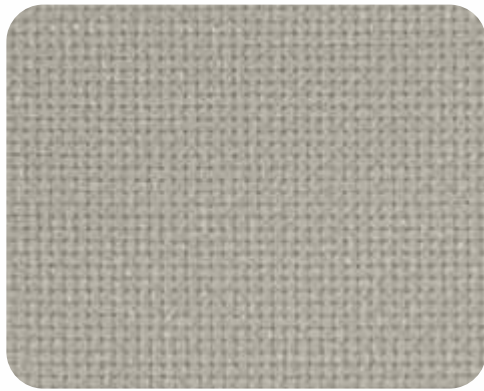
SOLIDS



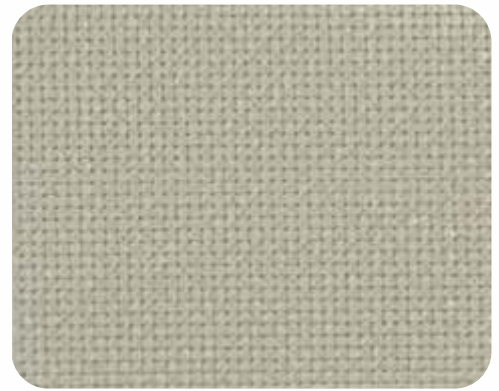
# Screen



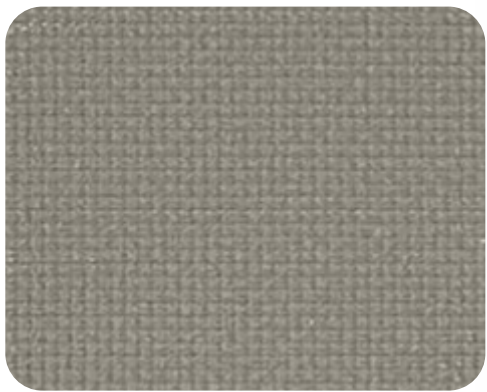
SC-Solid 37



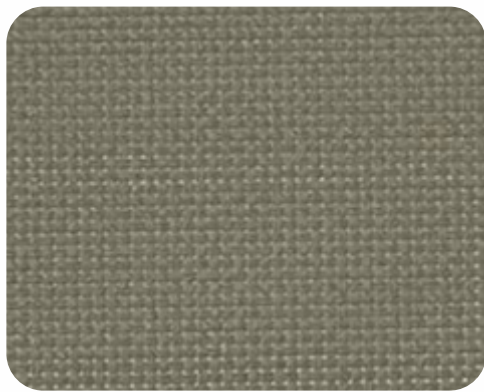
SC-Solid 38



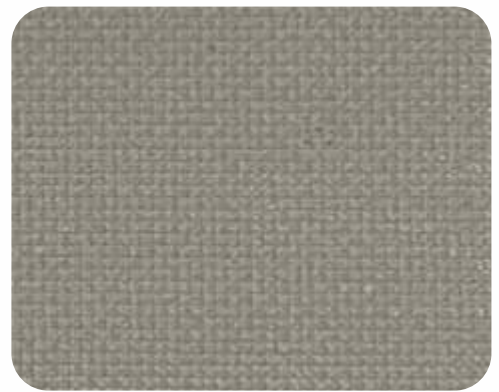
SC-Solid 39



SC-Solid 40



SC-Solid 41



SC-Solid 42



SC-Solid 43



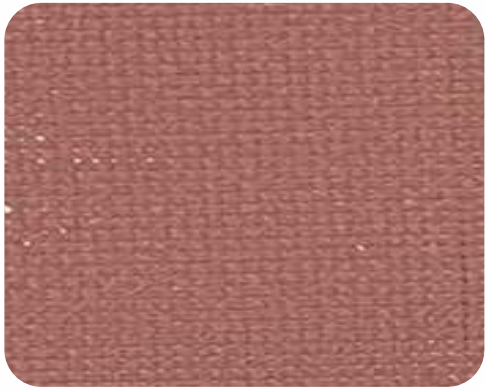
SC-Solid 44



SC-Solid 45

SOLIDS

# Screen



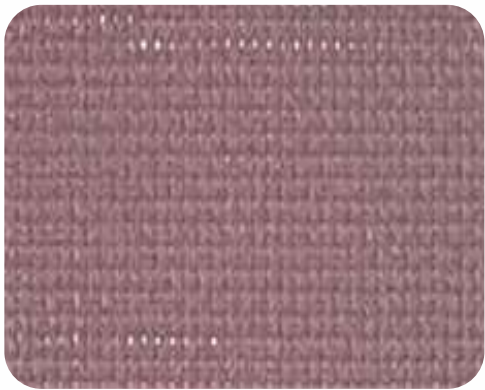
SC-Solid 46



SC-Solid 47



SC-Solid 48



SC-Solid 49



SC-Solid 50



SC-Solid 51



SC-Solid 52



SC-Solid 53



SC-Solid 54

SOLIDS

# Linen

## SOLIDS



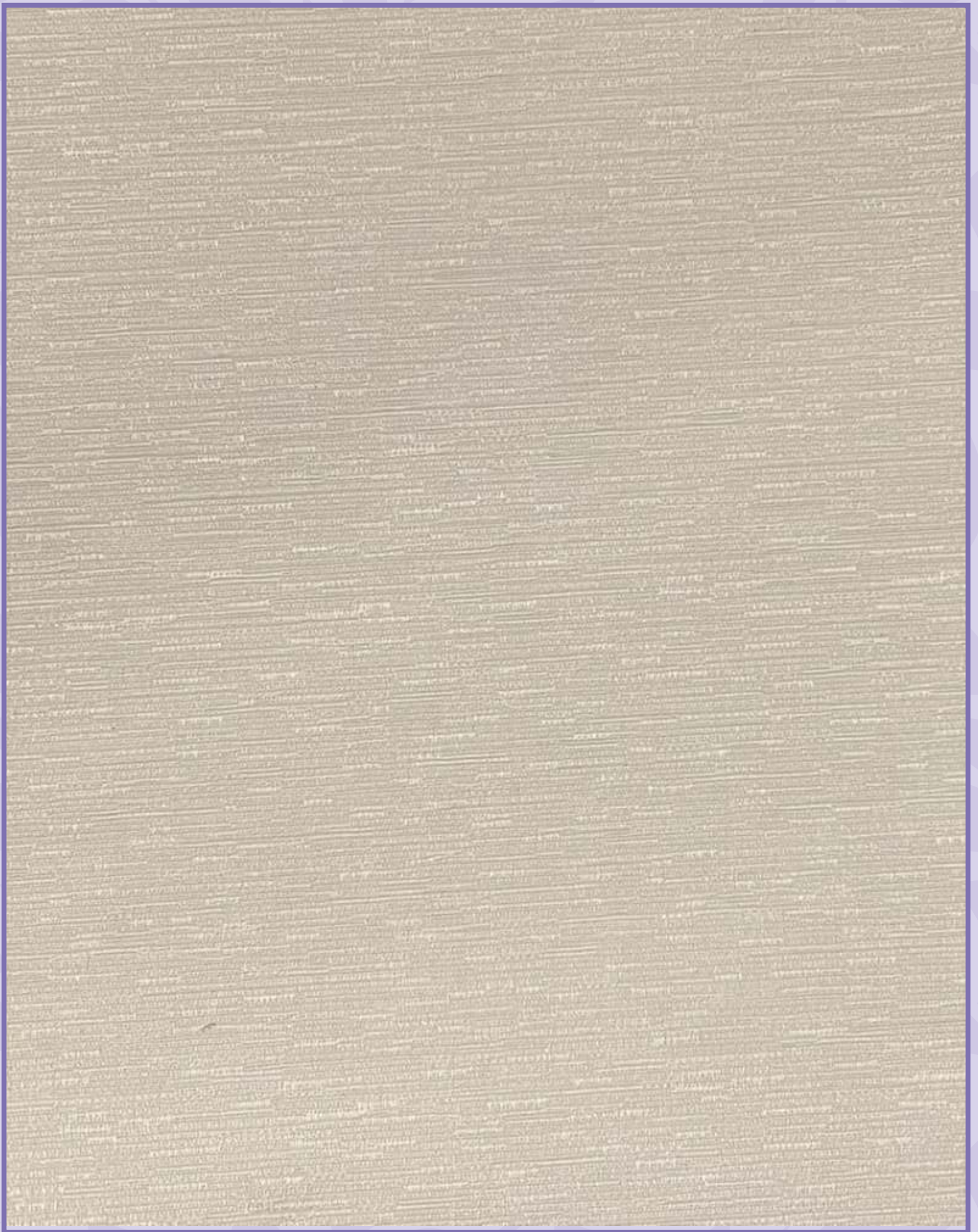
Roman



Panel



Roller



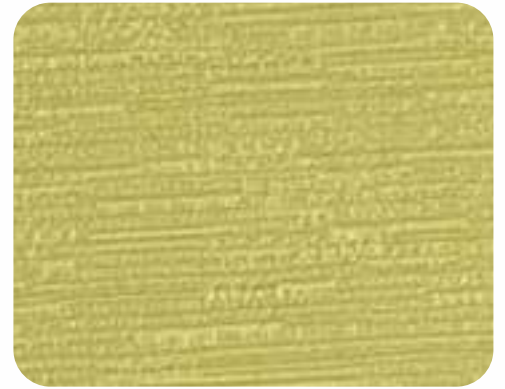
# Linen



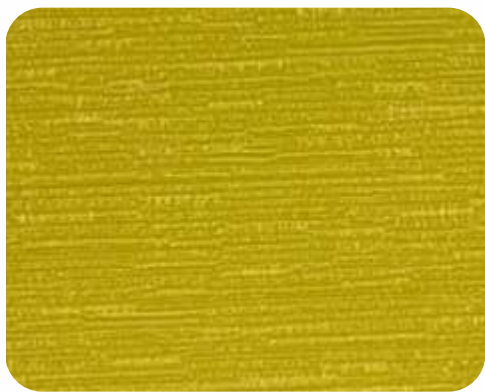
LN-Solid 1



LN-Solid 2



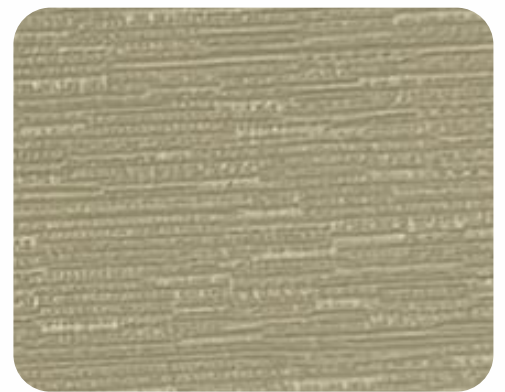
LN-Solid 3



LN-Solid 4



LN-Solid 5



LN-Solid 6



LN-Solid 7



LN-Solid 8



LN-Solid 9

SOLIDS

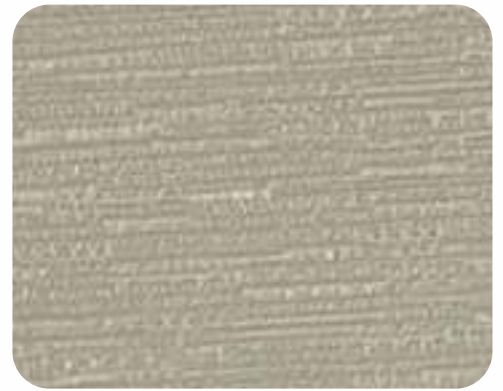
# Linen



LN-Solid 10



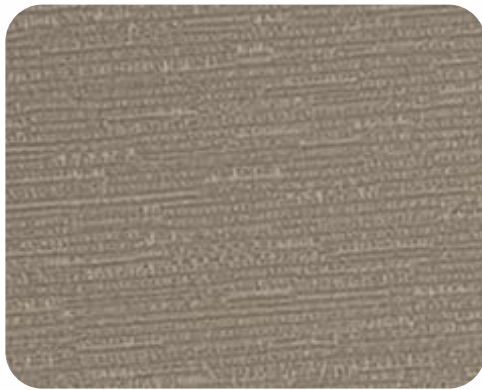
LN-Solid 11



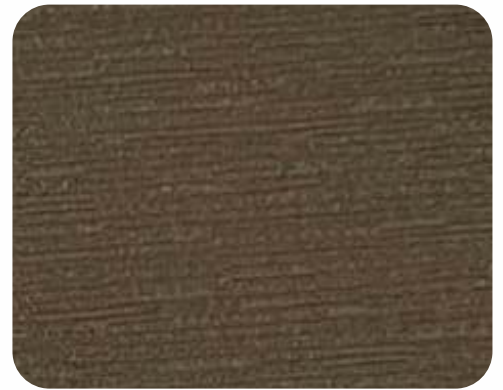
LN-Solid 12



LN-Solid 13



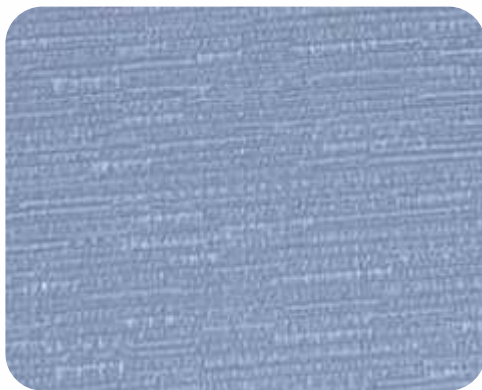
LN-Solid 14



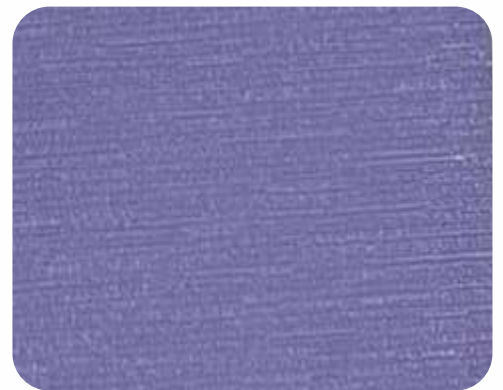
LN-Solid 15



LN-Solid 16



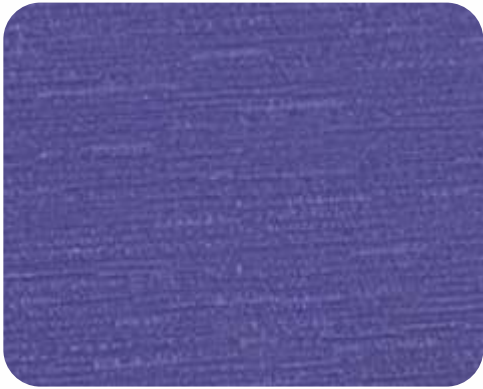
LN-Solid 17



LN-Solid 18

SOLIDS

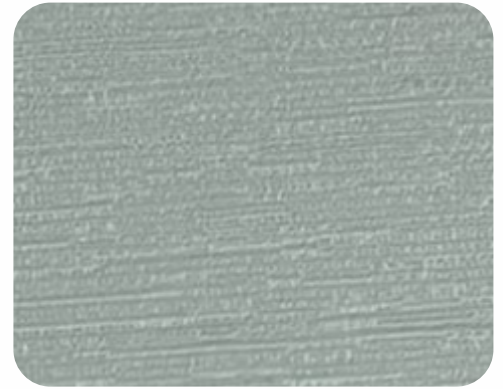
# Linen



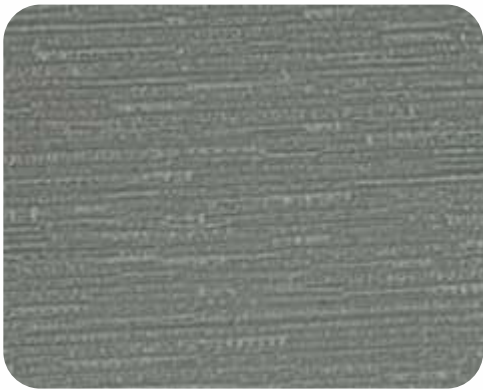
LN-Solid 19



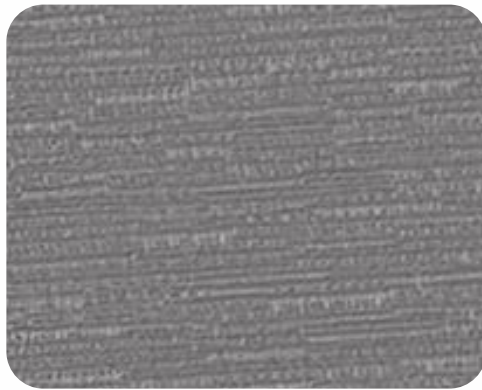
LN-Solid 20



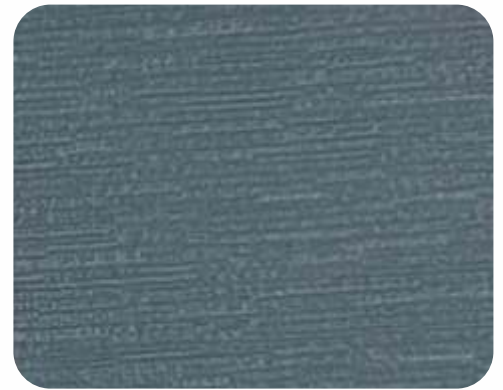
LN-Solid 21



LN-Solid 22



LN-Solid 23



LN-Solid 24



LN-Solid 25



LN-Solid 26



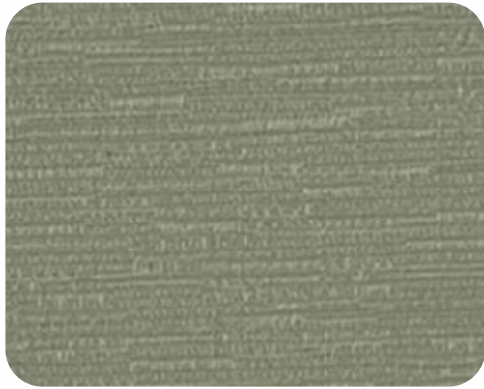
LN-Solid 27

SOLIDS

# Linen



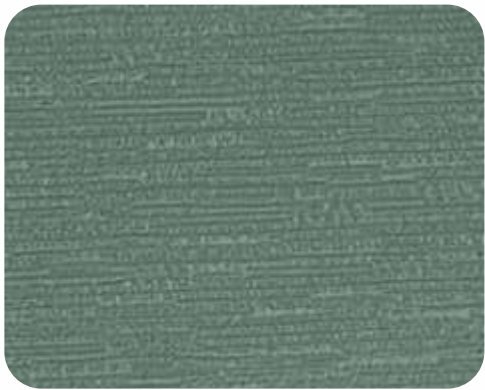
LN-Solid 28



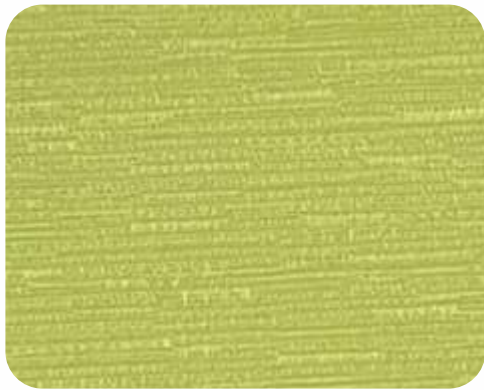
LN-Solid 29



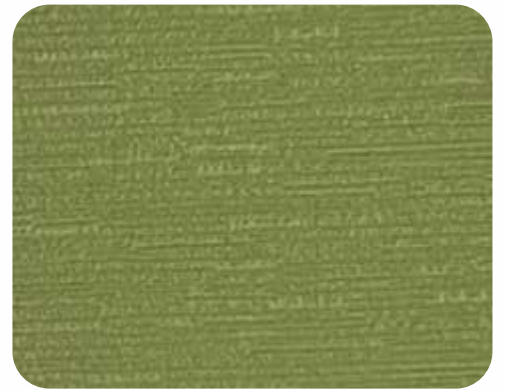
LN-Solid 30



LN-Solid 31



LN-Solid 32



LN-Solid 33



LN-Solid 34



LN-Solid 35



LN-Solid 36

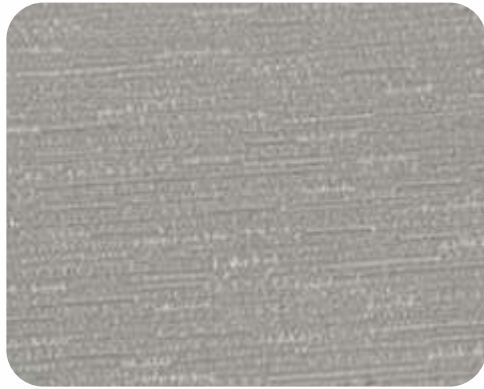
SOLIDS



# Linen



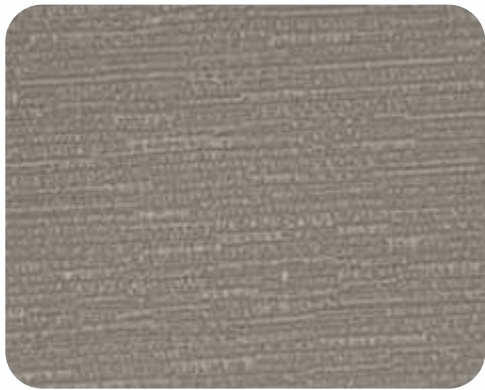
LN-Solid 37



LN-Solid 38



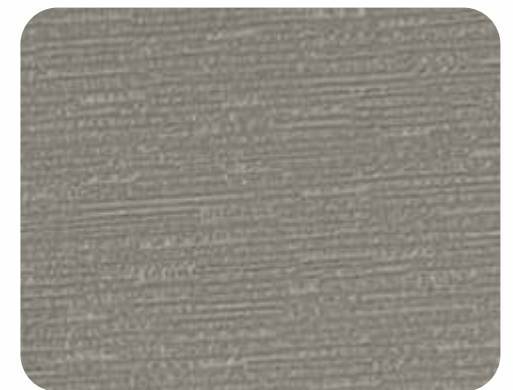
LN-Solid 39



LN-Solid 40



LN-Solid 41



LN-Solid 42



LN-Solid 43



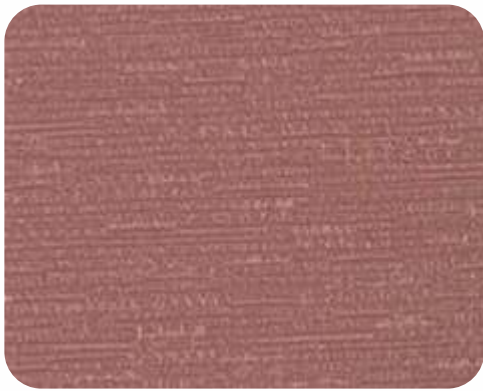
LN-Solid 44



LN-Solid 45

SOLIDS

# Linen



LN-Solid 46



LN-Solid 47



LN-Solid 48



LN-Solid 49



LN-Solid 50



LN-Solid 51



LN-Solid 52



LN-Solid 53



LN-Solid 54

SOLIDS

# Marco

SOLIDS



Roman



Panel



Roller



# Marco



MA-Solid 1



MA-Solid 2



MA-Solid 3



MA-Solid 4



MA-Solid 5



MA-Solid 6



MA-Solid 7



MA-Solid 8



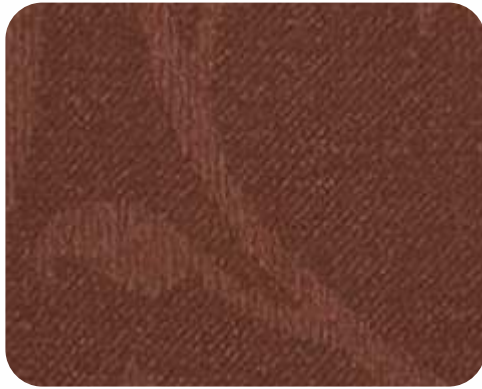
MA-Solid 9

SOLIDS

# Marco



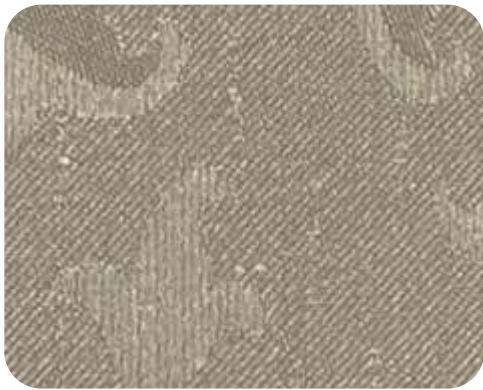
MA-Solid 10



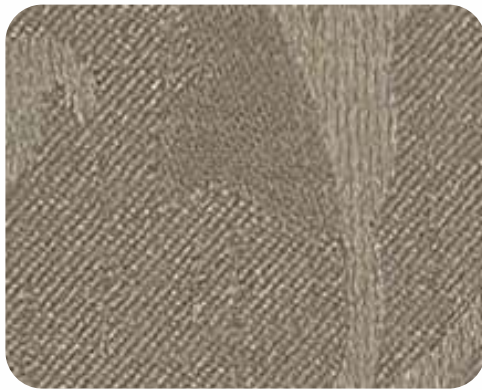
MA-Solid 11



MA-Solid 12



MA-Solid 13



MA-Solid 14



MA-Solid 15



MA-Solid 16



MA-Solid 17



MA-Solid 18

SOLIDS

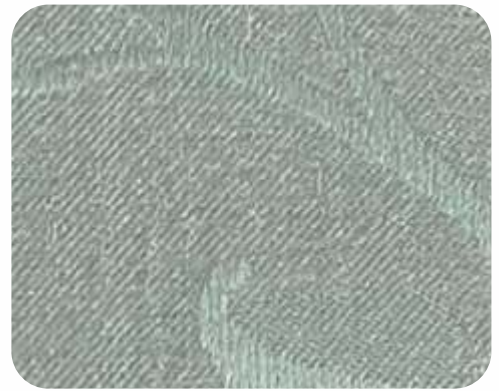
# Marco



MA-Solid 19



MA-Solid 20



MA-Solid 21



MA-Solid 22



MA-Solid 23



MA-Solid 24



MA-Solid 25



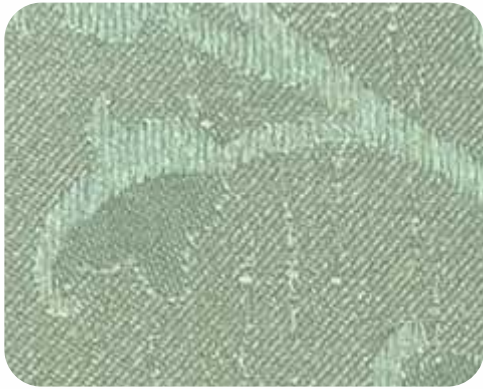
MA-Solid 26



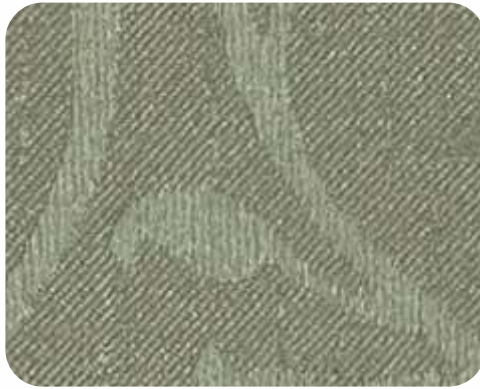
MA-Solid 27

SOLIDS

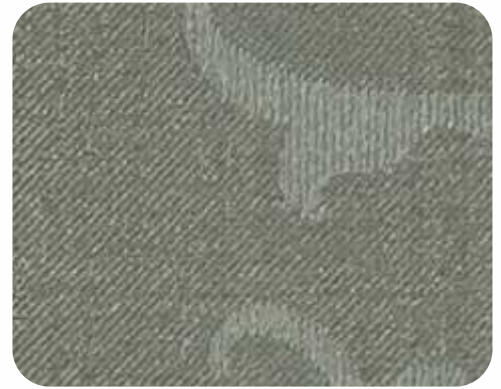
# Marco



MA-Solid 28



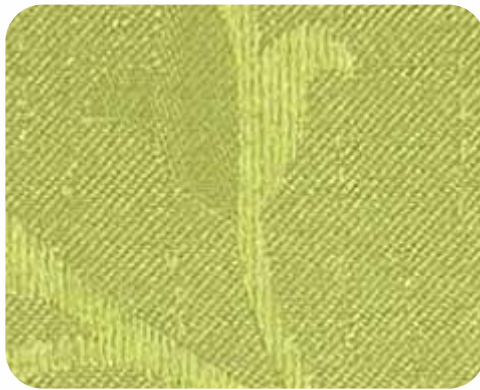
MA-Solid 29



MA-Solid 30



MA-Solid 31



MA-Solid 32



MA-Solid 33



MA-Solid 34



MA-Solid 35



MA-Solid 36

SOLIDS



# Marco



MA-Solid 37



MA-Solid 38



MA-Solid 39



MA-Solid 40



MA-Solid 41



MA-Solid 42



MA-Solid 43



MA-Solid 44



MA-Solid 45

SOLIDS

# Marco



MA-Solid 46



MA-Solid 47



MA-Solid 48



MA-Solid 49



MA-Solid 50



MA-Solid 51



MA-Solid 52



MA-Solid 53



MA-Solid 54

SOLIDS

# Metal

SOLIDS



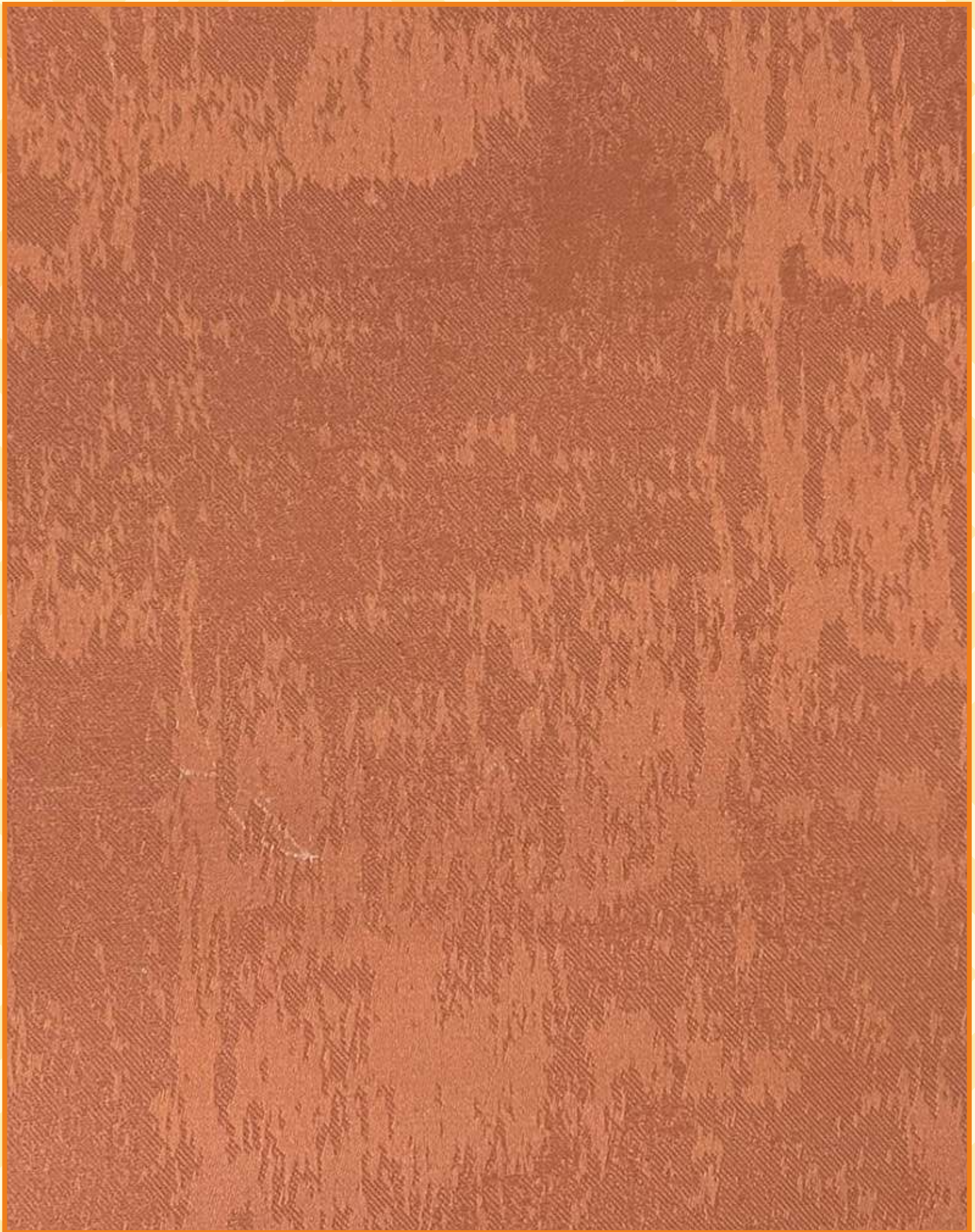
Roman



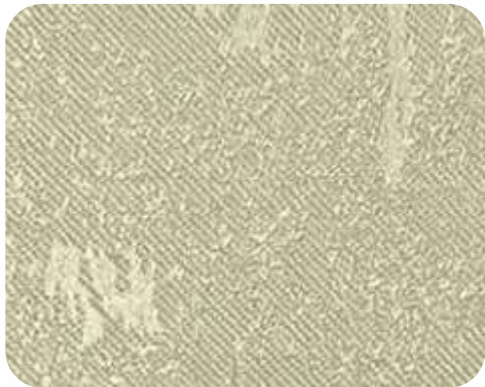
Panel



Roller



# Metal



MT-Solid 1



MT-Solid 2



MT-Solid 3



MT-Solid 4



MT-Solid 5



MT-Solid 6



MT-Solid 7



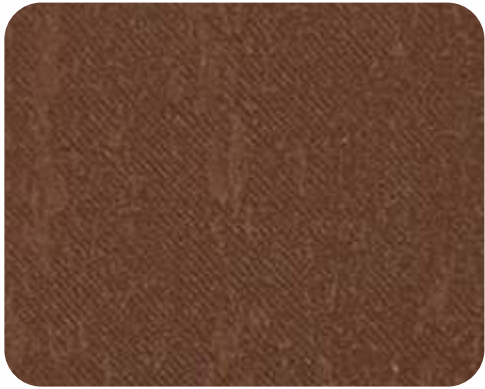
MT-Solid 8



MT-Solid 9

SOLIDS

# Metal



MT-Solid 10



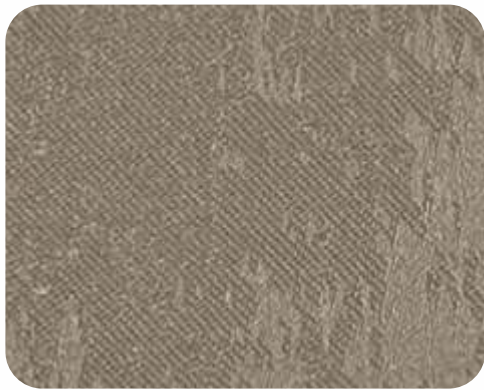
MT-Solid 11



MT-Solid 12



MT-Solid 13



MT-Solid 14



MT-Solid 15



MT-Solid 16



MT-Solid 17



MT-Solid 18

SOLIDS

# Metal



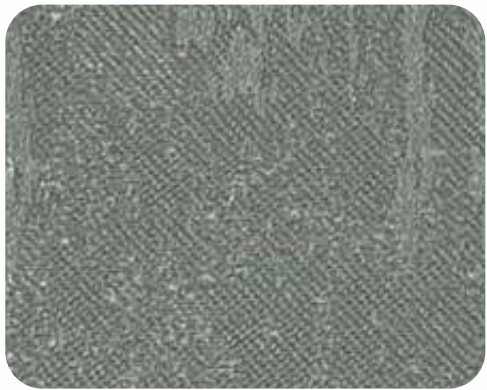
MT-Solid 19



MT-Solid 20



MT-Solid 21



MT-Solid 22



MT-Solid 23



MT-Solid 24



MT-Solid 25



MT-Solid 26



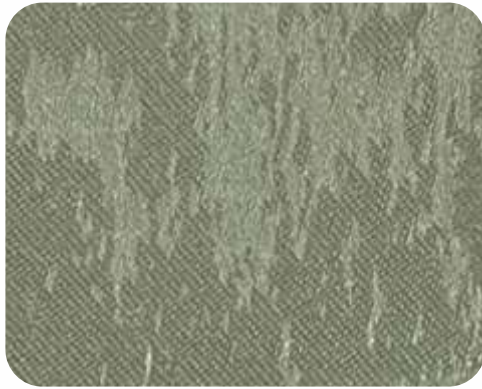
MT-Solid 27

SOLIDS

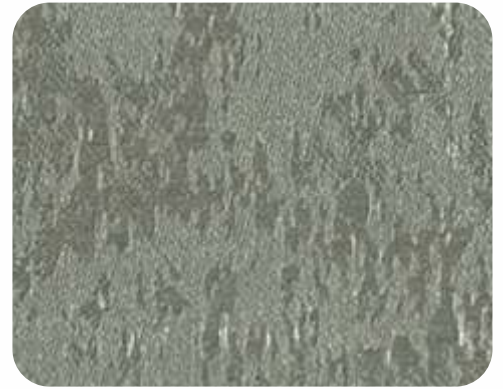
# Metal



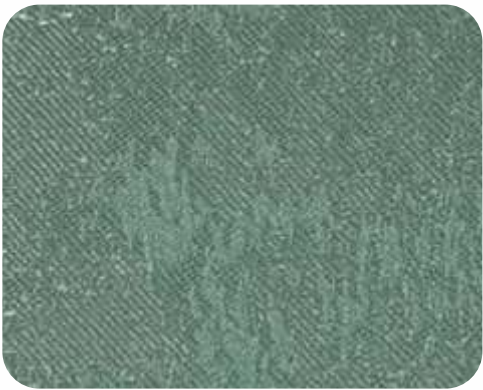
MT-Solid 28



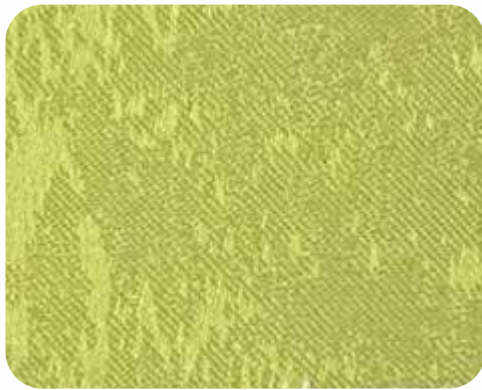
MT-Solid 29



MT-Solid 30



MT-Solid 31



MT-Solid 32



MT-Solid 33



MT-Solid 34



MT-Solid 35



MT-Solid 36

SOLIDS



# Metal



MT-Solid 37



MT-Solid 38



MT-Solid 39



MT-Solid 40



MT-Solid 41



MT-Solid 42



MT-Solid 43



MT-Solid 44



MT-Solid 45

SOLIDS

# Metal



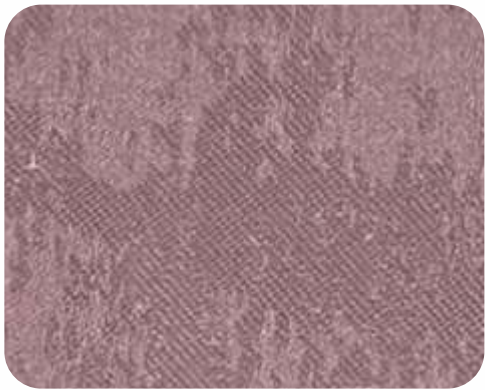
MT-Solid 46



MT-Solid 47



MT-Solid 48



MT-Solid 49



MT-Solid 50



MT-Solid 51



MT-Solid 52



MT-Solid 53



MT-Solid 54

SOLIDS

PREMIER ◀ PRINTS

—— THE ART ON FABRIC ——